

## Abecee inlustrad de l'ortografia koinè "Scriver Lombard"

Abecee inlustrad de Scriver Lombard, cont un quai esempi de realizazion fonematege (miga streitament fonetege).

Come vedarii dai esempi qì sota, i contests con plœ variazion diatopega sistematega i enn quei dei consonant "sibilant" (s, z, ʃ, ʒ, tʃ, dʒ, etc.), dei liquide (per esempi la L latina), de la <o> latina e dei nasai. Quests i enn i contests qe i g'hann plœ besogn de koinezazion, per poder far in manera qe i parolle i sian imediatament reconossibel a la letura, indipendentement da la paronzia de qì è qe l'ha scrivud. La recerca la demostra qe el reconossement iconeg de la parolla l'è stra-important per far in manera qe el letor al g'habia fiduça e sicureza ind la soa abilitaa de comprender el messaj d'un test. La koinezazion dei son plœ variabel (qe int el cas del Lombard i enn i sibilant, i liquide la <o> latina e i nasai) l'è donca un pass important per render el lombard utilizabel in tests comunegativ importants e de nivell soraprovinçal, indovè qe la comprension del messaj l'è ben plœ importanta qe la raprezentazion fonetega del scrittor.



### ala

**/<sup>1</sup>ala/**

(spantegad in tuta l'area lombardofona).

**/<sup>1</sup>ara/**

(in certe zone del comasc, olt milanes, novares, paves, varesot, in Tixin etc.).



### axed

**/a<sup>1</sup>zed/**

(es. Bormi, Vall Camonega, Tixin, etc.)

**/a<sup>1</sup>zed/**

(es. Int el Bressan, el Comasc, Cremasc, Lodesan, Paves, Tixin, VCO, etc.)

**/a<sup>1</sup>ze:/**

(es. Int el Comasc, Garda Bressan, Mantovan, Milanese)

### axid

**/a<sup>1</sup>zid/**

(es. Int la Vall Brembana, Vall Sabia, etc.)

**/a<sup>1</sup>zid/**

(es. Int la bergamasca, el novares, in Vall Sabia.)



## baxin

**/ba'ziŋ/**

(es. Bormi, Tixin)

**[ba'zĩ]**

(es. Bassa Bressana)

**/ba'ziŋ/**

(es. Comasc, Lodesan,  
Mantovan, Novares, Paves,  
Sondri, Tixin.)

**[ba'zĩ]**

(es. Leqes, Milanés, Paves,  
Tixin).

**[ba'zi]**

(es. Int la bergamasca,  
Bressan, Mantovan.)



## beqer

**/be'ker/ - /be'kɛr/**

(es. int la bergamasca, int el  
bressan, leqes, mantovan, la  
prov. de Sondri, etc.)

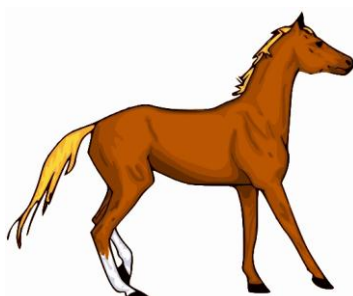
**/beke(ɪ)/ - /be'kɛ(ɪ)/**

(es. int el comasc, milanés,  
paves, Tixin, VCO, etc.)

## cavall

**/ka'val/**

(es. Brianzœl, Vall Camonega,  
Cremones, Garda Bressan, Vall  
Gobia, Mantovan, Milanés,  
Paves, Tixin, etc.)



**/ka'wal/**

(es. certe varietaa brianzœle e  
del milanés oriental).

**/ka'al/**

(es. In gran part de la  
Bergamasca e dol Bressan e in  
certe zone de l'olt Milanés)



## cena

**/<sup>1</sup>tʃena/ - /<sup>1</sup>tʃɛna/**

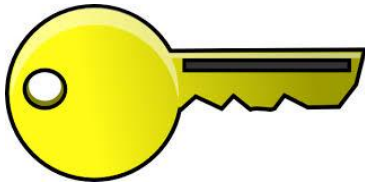
(vall Bregaia, Novares, prov. de Sondri, etc.)

**/<sup>1</sup>ʃena/ - /<sup>1</sup>ʃɛna/**

(val Brembana, val Camonega, Comasc, Milanese, Novares, prov. de Sondri, Tixin, etc.).

**/<sup>1</sup>sena/ - /<sup>1</sup>sɛna/**

(certe zone de la Brianza, de la bergamasca, del Bressan, int el Cremonese, Mantovan, Paves).



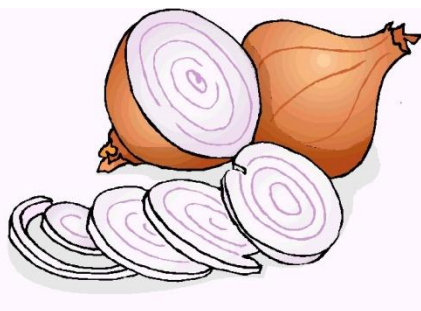
## ciav

**/<sup>1</sup>tʃav/**

(in asquas tuta l'area lombardofona)

**/<sup>1</sup>tʃau/**

(in certe zone del Lodesan, del Tixin, e del Varesot)



## cigolla

**/<sup>1</sup>tʃigola/ - /<sup>1</sup>tʃigula/**

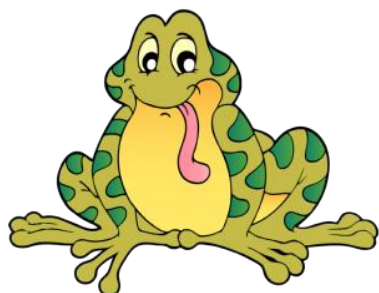
(es. Comasc, Leqes, Grixon, Novares, prov. de Sondri)

**/<sup>1</sup>ʃigola/ - /<sup>1</sup>ʃigula/**

(es. Vall Camonega, Comasc, Cremonese, Garda Bressan, Leqes, Milanese, Paves, Vall Sabia, prov. de Sondri, Tixin)

**/<sup>1</sup>sigola/ - /<sup>1</sup>sigula/**

(es. la bergamasca, int el Bressan, Mantovan, Paves, etc.)



## çat

**/<sup>1</sup>tʃat/**

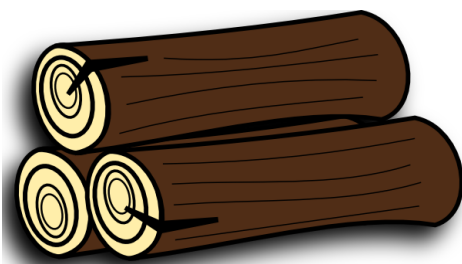
(es. int i Grixon, int el novares, in prov. de Sondri, Tixin, etc.)

**/ʃat/**

(es. int el comasc, in vall Brembana, int el milanes, novares, Tixin, etc.)

**/<sup>1</sup>sat/**

(es. int la bergamasca, int el bressan, paves, cremones, etc.)



## çOC

**/<sup>1</sup>tʃɔk/**

(es. Grixon, prov. de Sondri, etc.)

**/ʃɔk/**

(es. Vall Brembana, Vall Camonega, Milanes, Novares, Vall Seriana, prov. de Sondri, Tixin, etc.)

**/<sup>1</sup>sɔk/**

(es. int la bergamasca, Bressan, Paves, Cremones, Mantovan, etc.)



## did

**/<sup>1</sup>did/**

(spantegad in tuta l'area lombardofona, compres Comasc, Novares, e prov. de Sondri).

**/<sup>1</sup>di:/**

(int el comasc, mantovan, olt milanes, novares, vall Sabia, prov. de Sondri).



## era

**/<sup>1</sup>era/**

(per es. int una quai zona del bressan, int el leqes, a Pos'ciav, in Provinça de Sondri, int el VCO).

**/<sup>1</sup>ɛra/**

(in gran part de l'area lombardofona).



## fœg

**/<sup>1</sup>fœg/**

(per es. int una quai zona del bressan, del paves, de la Provinça de Sondri e del Tixin).

**/<sup>1</sup>fœ:g/**

(Spantegad in gran part de l'area lombardofona)

## fog

**/<sup>1</sup>fog/**

(in tuna quai part del cremones e del VCO).



## gall

**/<sup>1</sup>gal/**

(in asquas tuta l'area lombardofona).

**/<sup>1</sup>ga:l/**

(int el Lodesan, , Novares, Paves).



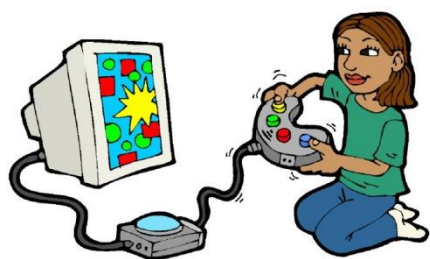
## gianda

**/<sup>1</sup>dʒanda/**

(in asquas tuta l'area lombardofona).

**/<sup>1</sup>ʒanda/**

(int un quai sit de la bergamasca, del leqes, de la prov. de Sondri, e del Tixin).



## jœg

**/<sup>1</sup>zœg/**

(in Vall Bregaia, int la bergamasca, int el bressan, int el comasc, in prov. de Sondri, in Tixin, int el VCO, etc.).

**/<sup>1</sup>zœg/**

(int la bergamasca, int el bressan, int el mantovan, int el paves, novares, etc.).

**/<sup>1</sup>dzœg/**

(int la bergamasca, int el cremones, int el milanes, paves, novares, in Tixin, int el VCO etc.).



## lengua

**/<sup>1</sup>lengwa/ - /<sup>1</sup>lengwa/**

(tute do i forme i enn spantegade int l'area lombardofona).



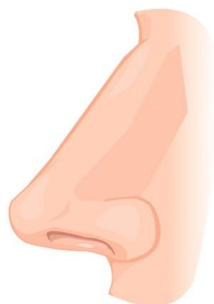
## maza

**/<sup>1</sup>matsa/**

(in vall Bregaia, Brianza, int el comasc, prov. de Sondri, Tixin, VCO, etc.).

**/<sup>1</sup>masa/**

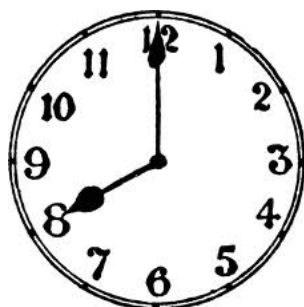
(int la bergamasca, int el bressan, milanes, paves, etc.).



**nas**

**/<sup>1</sup>naz/**

(spantegad in tuta l'area lombardofona)



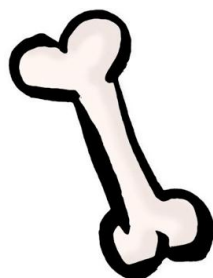
**ora**

**/<sup>1</sup>ora/**

(es. Grixon, Novares, prov. de Sondri, Tixin)

**/<sup>1</sup>ura/**

(spantegad in tuta l'area lombardofona)



**OSS**

**/<sup>1</sup>os/**

(spantegad in tuta l'area lombardofona)



**œgg**

**/<sup>1</sup>œdʒ/**

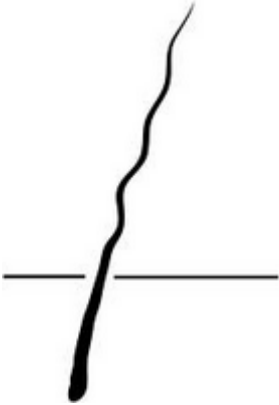


(spantegad in tuta l'area lombardofona).

**ogg**

**/<sup>1</sup>odʒ/**

(in certe zone del cremones e int el mantovan).



	<p><b>pel</b></p> <p><b>/<sup>1</sup>per/</b> (es. int el comasc, in Tixin, int el varesot, etc.)</p> <p><b>/<sup>1</sup>pel/</b> (in certe zone de la bergamasca, de la prov. de Sondri, del Tixin)</p> <p><b>/<sup>1</sup>pe:l/</b> (spantegad in tuta l'area lombardofona)</p>
	<p><b>pell</b></p> <p><b>/<sup>1</sup>pe:l/</b> (in tuta l'area lombardofona)</p>
<p><b>40</b></p>	<p><b>quaranta</b></p> <p><b>/<sub>1</sub>kwa<sup>1</sup>ranta/</b> (int la gran part de l'area lombardofona)</p> <p><b>/<sub>1</sub>kwa<sup>1</sup>renta/</b> (int el novares, paves, una quai zona del Tixin e VCO)</p>
	<p><b>ragn</b></p> <p><b>/<sup>1</sup>rap/</b> (in tuta l'area lombardofona)</p>





## sal

**/<sup>1</sup>sal/**

(es. vall Bregaia, int la bergamasca, int el bressan, cremones, lodesan, novares, provinça de Sondri etc.)

**/<sup>1</sup>sa:l/**

(es. int el Garda bressan, int el cremones, lodesan, paves, novares, in provinça de Sondri etc.)

**/<sup>1</sup>sa:/**

(es. int el comasc, milanes, tixines, in provinça de Sondri etc.)



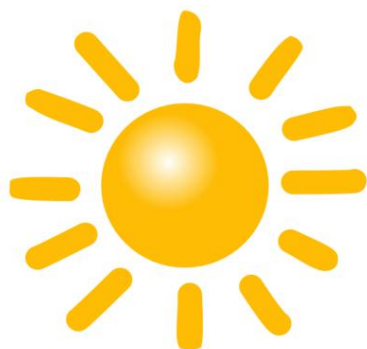
## scriver

**/<sup>1</sup>skriver/ - /<sup>1</sup>skrier/**

(es. vall Bregaia, gran part del Bressan, int el Cremones, el Mantovan, in prov. de Sondri, etc.)

**/<sup>1</sup>skriv/**

(es. int la bergamasca, Comasc, Cremasc, Milanes, prov. de Sondri, Tixin, etc.)



## sol

**/<sup>1</sup>sol/**

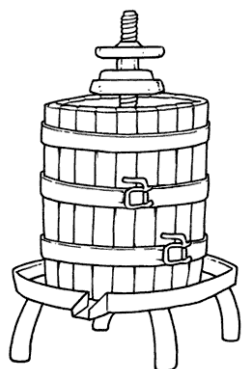
(es. Mantovan, Paves, Tixin, etc.)

**/<sup>1</sup>sul/**

(es. int la bergamasca, Bressan, Cremones, Lodesan, prov. de Sondri, Tixin, etc.)

**/<sup>1</sup>su:/**

(es. Comasc, Paves, Milanes, Tixin, etc.)



## torcc

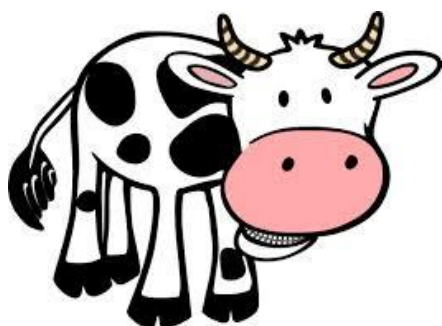
**/<sup>1</sup>tɔrtʃ/ - /<sup>1</sup>turtʃ/**

(spantegads in gran part de l'area lombardofona)

## tœrcc

**/<sup>1</sup>tœrtʃ/**

(int una quai part del Tixin e del VCO)



## vaca

**/<sup>1</sup>vaka/**

(es. int la bergamasca, int el bressan, cremones, leqes, milanes, in Tixin etc.)

**/<sup>1</sup>waka/**

(es. certe varietaa brianzœle e del milanes oriental).

**/<sup>1</sup>aka/**

(es. in certe zone de la bergamasca, del bressan, e int el cremasc)



## zop

**/<sup>1</sup>tzɔp/**

(es. in Brianza, int el comasc, in prov. de Sondri, in Tixin etc.)

**/<sup>1</sup>sɔp/**

(es. in bergamasc, bressan, milanes, novares, paves, etc.)